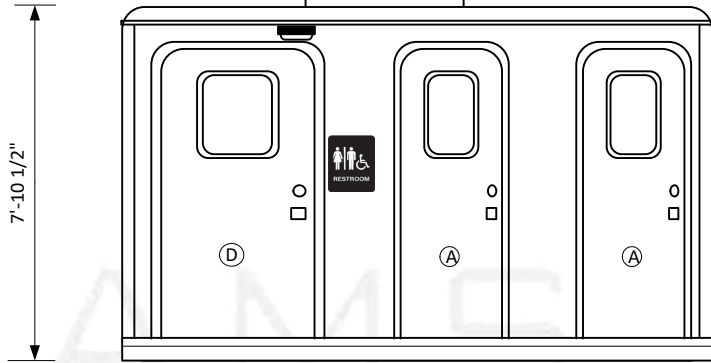


7,83821,750

13'-0"

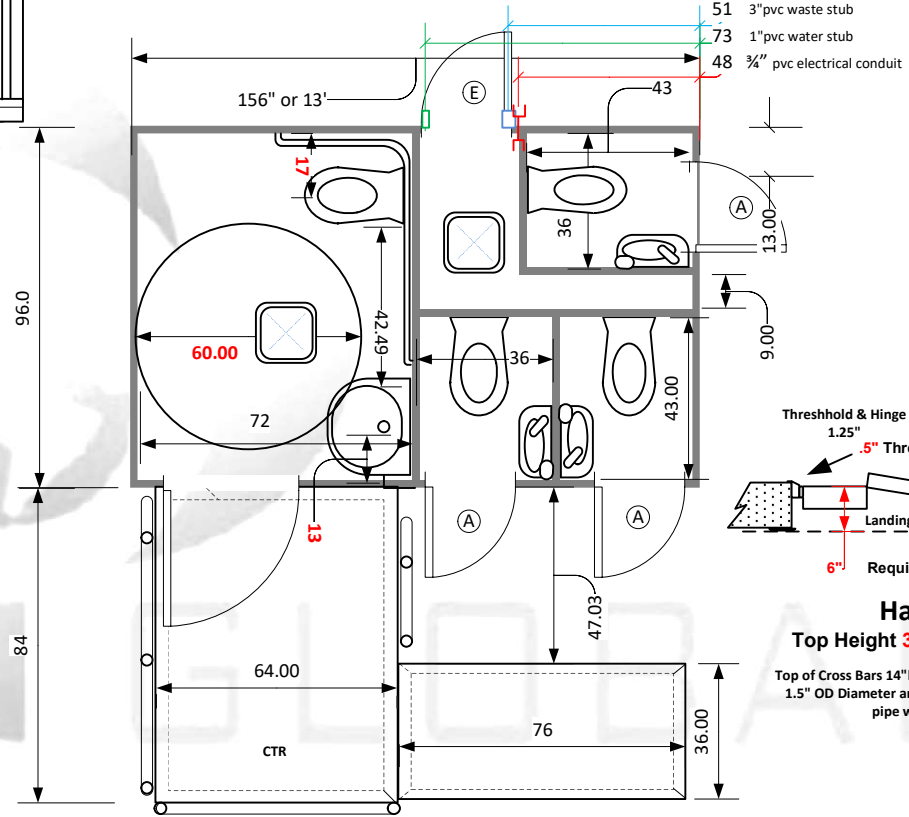


CI 13 ADA 4ST D



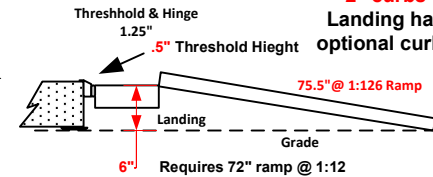
- (A) 78"x24" radius LH
- (D) 78"x36" radius LH
- (E) 48"x24" radius LH

Direct Connect 3" sewer
 Container Ship-able
 2 turbo vent fans and or 13500 BTU A/C
 1 ADA accessible restroom 3 Standard
 Commercial toilet & Large ADA wall hung sink
 Obscure skylight window in radius door
 Door closers & occupancy indicators
 All metal and composite construction
 LED 100,000 hour burn lighting
 120 VAC power requirement
 Mirror, soap, towel & tissue dispensers
 City water connection, outside faucet/drain
 Aluminum ADA ramps w/ railings



For 1:24 slope
 specify 2
 ramps

Ramps have
 2" curbs
 Landing has
 optional curbs



Handrails

Top Height 36" above Platform

Top of Cross Bars 14" below bottom of Top Rail. Railing
 1.5" OD Diameter and slides into 4" piece of 1.5" ID
 pipe welded to landing.

This document is the property of and contains unpublished proprietary information and trade secrets of A.M.S. Global Inc. By accepting possession of the document the recipient agrees to make no copies transcriptions or any use of this document or the information contained herein except as authorized by A.M.S. Global Inc. and further agrees to safe keep this document and return in to A.M.S. Global Inc. upon demand.

These restrooms are designed to be compliant with all current guidelines as we are aware of . Many guidelines have gray areas and points open to interpretation. Different entities may have differed interpretations or local differences. We suggest getting approvals of final plans from the authorities in the local the unit will be placed

Approved by _____

