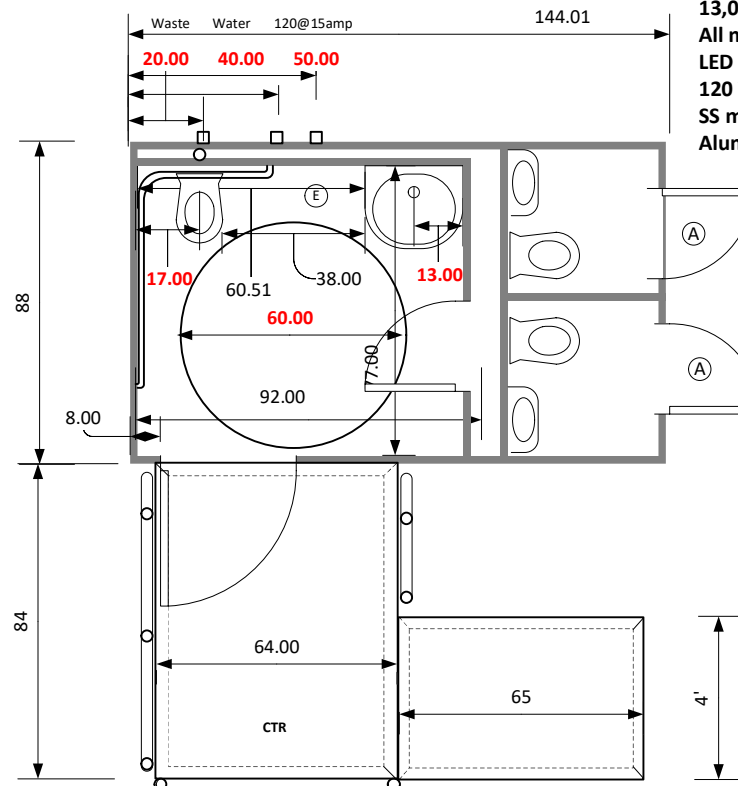


## CI ADA 12 3ST D



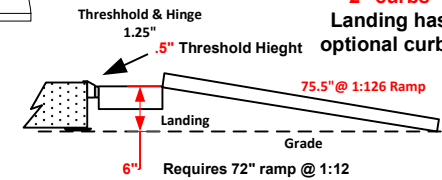
- (A) 78"x24" radius LH
- (D) 78"x36" radius LH
- (E) 48"x24" radius LH

Direct Connect 3" sewer  
 Container Shippable  
 1 ADA compliant restroom 2 Standard  
 Commercial toilet & Large ADA wall hung sink  
 Obscure skylight window in radius door  
 Door closer & occupancy indicators  
 13,000 BTU A/C 5500 Heat  
 All metal and composite construction  
 LED 100,000 hour burn lighting  
 120 VAC power requirement  
 SS mirror, soap, towel & tissue dispensers  
 Aluminum ADA ramps w/Stainless steel railings



For 1:24 slope  
 specify 2  
 ramps

Ramps have  
 2" curbs  
 Landing has  
 optional curbs



### Handrails

Top Height 36" above Platform

Top of Cross Bars 14" below bottom of Top Rail. Railing  
 1.5" OD Diameter and slides into 4" piece of 1.5" ID  
 pipe welded to landing.

These restrooms are designed to be compliant with all current guidelines as we are aware of. Many guidelines have gray areas and points open to interpretation. Different entities may have differed interpretations or local differences. We suggest getting approvals of final plans from the authorities in the local the unit will be placed

This document is the property of and contains unpublished proprietary information and trade secrets of A.M.S. Global Inc. By accepting possession of the document the recipient agrees to make no copies transcriptions or any use of this document or the information contained herein except as authorized by A.M.S. Global Inc. and further agrees to safe keep this document and return in to A.M.S. Global Inc. upon demand.

Approved by

