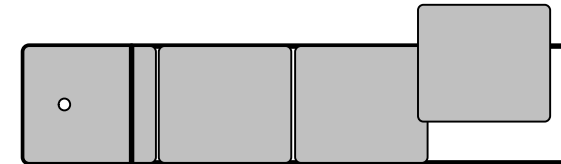
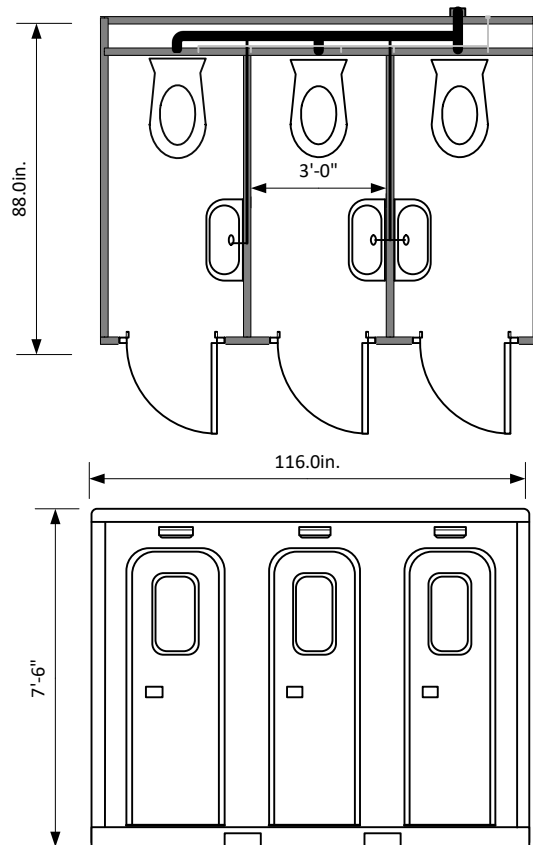


8,91317,500



CI 10 3ST D



4 units ship per semi drop deck
flatbed
lower deck

Three Restroom Skid

- 3" sewer drain connection
- 50 amp 240 electrical service
- 13500 BTU AC with 5500 heat strip
- Radiant Barrier insulation
- 30 year rated LED lighting
- All steel frame & exterior
- Pebbled surface wall panels
- 1.5" steel tubing frame
- Rubber coin over epoxied steel floor
- .040 Aluminum exterior
- Radiused doors with window skylights
- Led exterior entry light
- Automatic door closers
- Vacant Occupied Deadbolt.
- Commercial Wall Hung Fixtures
- Metered faucets
- Stainless Steel towel, tissue & soap dispensers
- Forklift loadable

This document is the property of and contains unpublished proprietary information and trade secrets of A.M.S. Global Inc. By accepting possession of the document the recipient agrees to make no copies transcriptions or any use of this document or the information contained herein except as authorized by A.M.S. Global Inc. and further agrees to safe keep this document and return in to A.M.S. Global Inc. upon demand.

Approved by _____

